

landarch



landscape architectural portfolio

# landarch

## COMPANY OUTLINE

### COMPANY PROFILE

#### CORPORATE MISSION:

To find unique landscape architectural solutions supported by professional service and efficient maintenance schemes. LANDARCH (Pty) Ltd. is a full service landscape design and installation company. It has been serving residential, commercial, industrial and recreational clients for over 26 years and prides itself on providing tailor-made innovative solutions. One of the factors contributing to the company's success is its professional customer service from the beginning of a project through to the various design, planning, construction and maintenance phases to ensure that the design vision is achieved and sustained. The company is also committed to environmental awareness and habitat restoration.

#### MANAGING DIRECTOR: GREG STRAW

(Nat. Dip. Hort. B.Tech. Land. Arch) believes in finding the best practical solution for each project while adding a unique creative touch every time. He has successfully operated nurseries and landscape businesses throughout South Africa, also gaining international experience in Jordan, Israel, Cyprus, Seychelles, Zambia, Mozambique, Mauritius, Lesotho and UAE. The company's skills cover areas from Horticulture, Landscape Architecture, Irrigation, Rehabilitation and Maintenance.

#### THE TEAM

LANDARCH (Pty) Ltd. a Landscape Architectural company with an "In-House" fully qualified and experienced team who successfully cover the following aspects of project design, construction and implementation:

- LANDSCAPE ARCHITECTURE
- LANDSCAPE QUANTITY SURVEYOR
- LANDSCAPE INSTALLATION
- LANDSCAPE CONSTRUCTION
- LANDSCAPE MAINTENANCE
- PRODUCTION NURSERIES
- AGRICULTURE

### SERVICES

#### LANDSCAPE ARCHITECTURE:

Design services cover a wide scope of projects from smaller private residential landscapes to large scale developments such as resorts, spa's, private islands and rehabilitation programs.

#### LANDSCAPE CONSTRUCTION & INSTALLATION

- Plant supply and installation.
- Turf installation and renovation.
- Irrigation and fertigation systems.

#### HARDSCAPING

- Paving installation.
- Land Art and Retaining structures.
- Timber decking and outdoor living areas.
- Pools, ponds and Water Features.

#### MAINTENANCE AND REHABILITATION

Landscape maintenance ensures that the long-term vision and success of the landscape is achieved. Customized maintenance service is provided upon project completion or alternatively can be offered to clients focused on their existing maintenance needs.

Landscape rehabilitation is the process whereby the land is returned to its former state after being damaged by industrial and/or natural disasters.

#### NURSERY ESTABLISHMENT AND FARMING

Nursery establishment and propagation of endemic or indigenous plants is often essential on foreign sites, ensuring the success of the projects. These nurseries are converted for propagation of culinary plants for the local community to promote education and understanding, enabling the community in terms of self-sufficiency.

# landarch

## COMPANY PROJECTS

---

### RESIDENTIAL PROJECTS

Hirji Residence – Bryanston, Johannesburg

House Aujan – Anse Louise, Mahe, Seychelles

House Mohammed – Parkview, Johannesburg

House Moholi – Kyalami, Johannesburg

House Ramos – Alberton, Johannesburg

Kaddoura Residence – Lusaka, Zambia

Private Residence – Kyalami, Johannesburg

Private Island – Abu Dhabi, UAE

61 Mount Road – Bryanston, Johannesburg

PROJECT DESCRIPTION:

This project was initially two separate properties which required the landscape intervention to successfully blend and mold the divided stands into one continuous park-like garden. This was achieved through the incorporation of rolling lawns and the clumping of trees to create forest like boundaries directing the user and creating rooms throughout the garden.



Hirji Residence – Bryanston, Johannesburg

PROJECT DESCRIPTION:

One of the more challenging international projects in terms of habitat and topography. This private house located in the indigenous forests of Mahe Island, required reintroduction of endemic species to the site. Accessibility and movement through the steep site was achieved by the winding pathway leading one around the property, through areas of rehabilitated natural vegetation, opening up onto various lawn areas for use as enjoyment and relaxation spaces.



House Aujan – Anse Louise, Mahe, Seychelles

#### PROJECT DESCRIPTION:

Renovations were required to the garden surrounding this Tuscan style private home. In order to liven up the dead spaces which were previously created in the garden, a Mediterranean inspired approach was adopted. The creation of various 'rooms' allowed for the design of different environments and ultimately different experiences. Indigenous species were used in this Mediterranean inspired design to minimize maintenance and water requirements.



#### PROJECT DESCRIPTION:

The continuity from interior to exterior spaces and visa versa, was achieved with rolling lawns meeting the edge of the house and a continuation of the floor into the garden. Beds were placed all along the boundary wall as a means of breaking the strong edges of the garden. Topographical manipulation was important due to the steep gradient experienced on site. This was achieved through mounding of soil as well as the incorporation of various terraces. Making the gradient more practical and manageable facilitated the management and collection of stormwater at the bottom of the site.



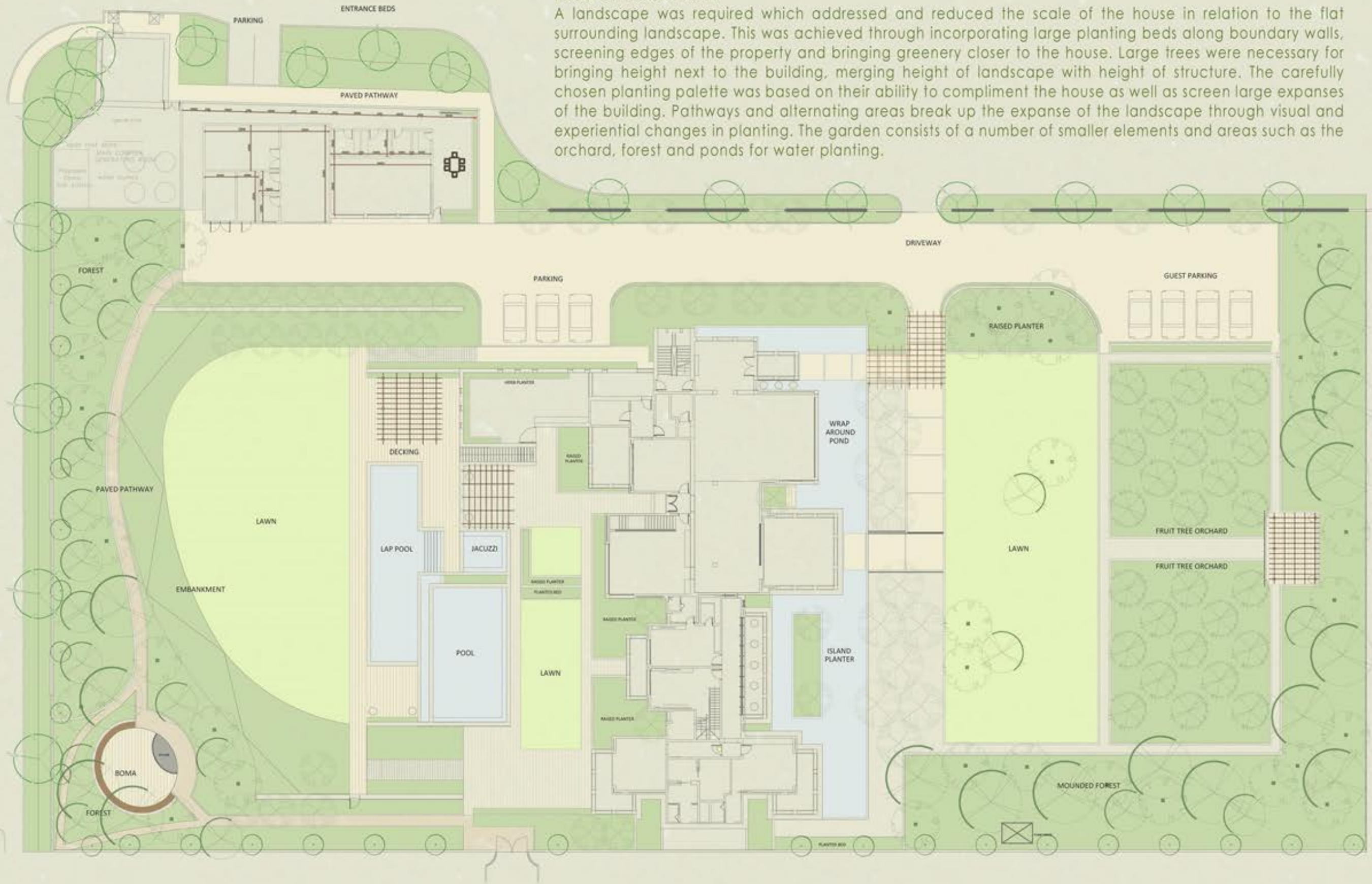
#### PROJECT DESCRIPTION:

Situated in the Meyersdal Nature Reserve Estate, the design of this project was strongly influenced by the surrounding natural vegetation on site. This was achieved by terracing the veld that leads you towards the house, framing the driveway. The terraced aspect of the beds aided in the management of on site stormwater. The rest of the beds surrounding the house are rock beds which incorporated strategic planting of aloes and cycad, bringing life to dead spaces and corners.



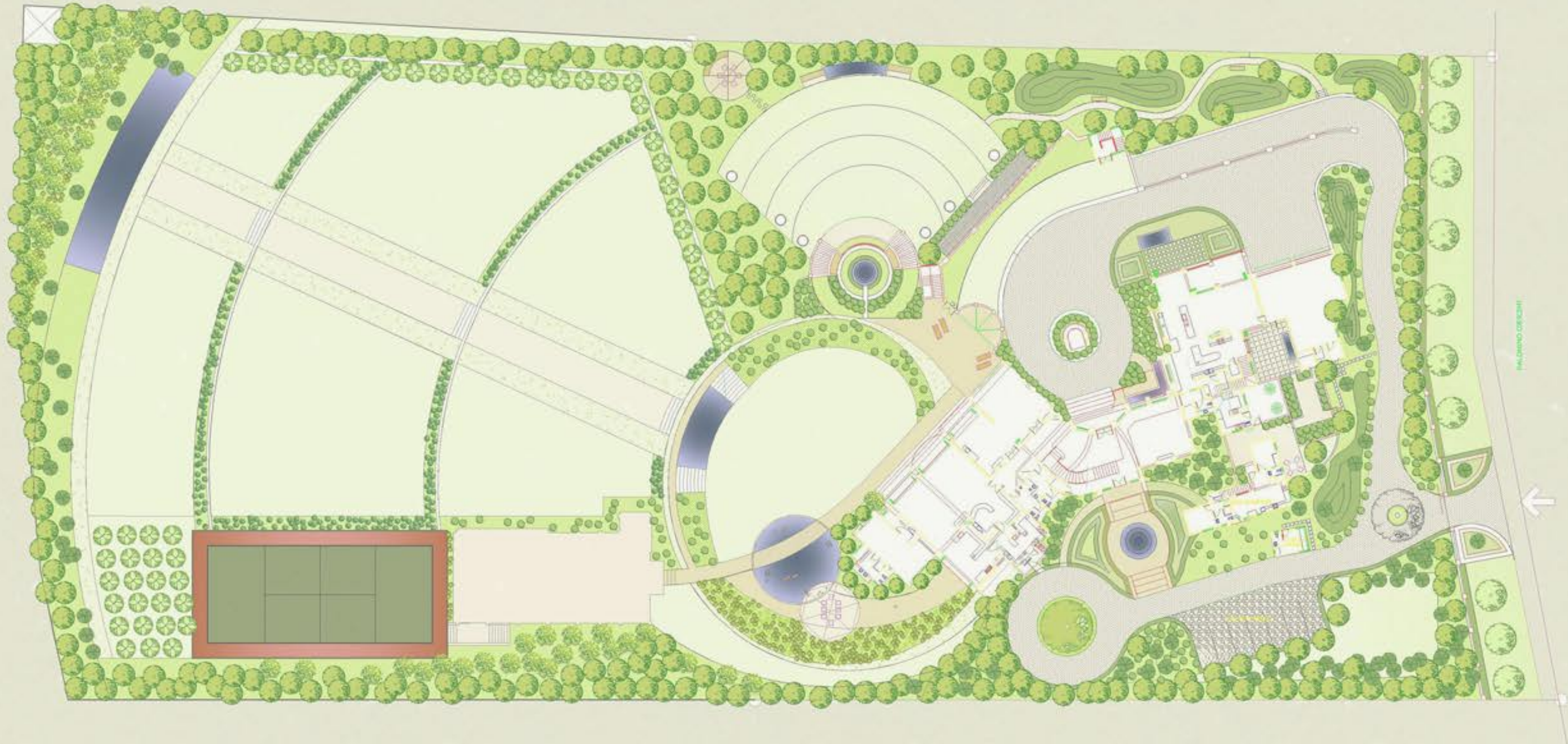
#### PROJECT DESCRIPTION:

A landscape was required which addressed and reduced the scale of the house in relation to the flat surrounding landscape. This was achieved through incorporating large planting beds along boundary walls, screening edges of the property and bringing greenery closer to the house. Large trees were necessary for bringing height next to the building, merging height of landscape with height of structure. The carefully chosen planting palette was based on their ability to compliment the house as well as screen large expanses of the building. Pathways and alternating areas break up the expanse of the landscape through visual and experiential changes in planting. The garden consists of a number of smaller elements and areas such as the orchard, forest and ponds for water planting.



PROJECT DESCRIPTION:

The main design intention for this project was based on the clients brief, specifying the creation of an event space in the garden to be utilized and enjoyed by family and friends.



This project included the design of two luxury villas on a private island, both a Tented Villa and Family Villa. Each villa required a unique and inspiring design intervention, each with its own opportunities and requirements in the harsh, arid surrounding environment. The image below indicated the proximity of the Villas from one another across the island.



FAMILY VILLA

TENTED VILLA

PRIVATE ISLAND  
ABU DHABI, UNITED ARAB EMIRATES



#### PROJECT DESCRIPTION:

There was very little existing vegetation surrounding the Tented Villa. All landscape interventions needed to be implemented from scratch. The lack of landscaping and vegetation was amplified by the bare components of the exposed structure. There was no cohesion between the minimal existing beds and planting. The main intention was to create areas of mass planting to break the expanse of the surrounding landscape, as well as hiding odd corners and edges of the villa. A Mediterranean planting palate was used for the presence of colour intended to brighten up the pale, harsh desert.



## PRIVATE ISLAND - TENTED VILLA

ABU DHABI, UNITED ARAB EMIRATES



CASTLE 1, 2 AND GYMNASIUM



TENTED VILLA



PLANTING PLAN



LIGHTING PLAN



PLANTING PLAN



PERGOLA LAYOUT & DETAIL



#### PROJECT DESCRIPTION:

The main challenge regarding the Family Villa was the reduction of the scale of the house which was emphasized by the flat surrounding landscape. This was addressed through the incorporation of mass planting beds directly along the edges of the Villa. Rolling lawns were included so as to break the pale, dull environment in which the villa was located, edged along the site boundary by more mass planting beds which acted as a buffer between planted garden and desert. Berms were placed throughout the garden to break the stark, bare areas of flat lawn. The same Mediterranean planting palette was used, in keeping with the landscape aesthetics of the Tented Villa.

landarch

## PRIVATE ISLAND - FAMILY VILLA

ABU DHABI, UNITED ARAB EMIRATES



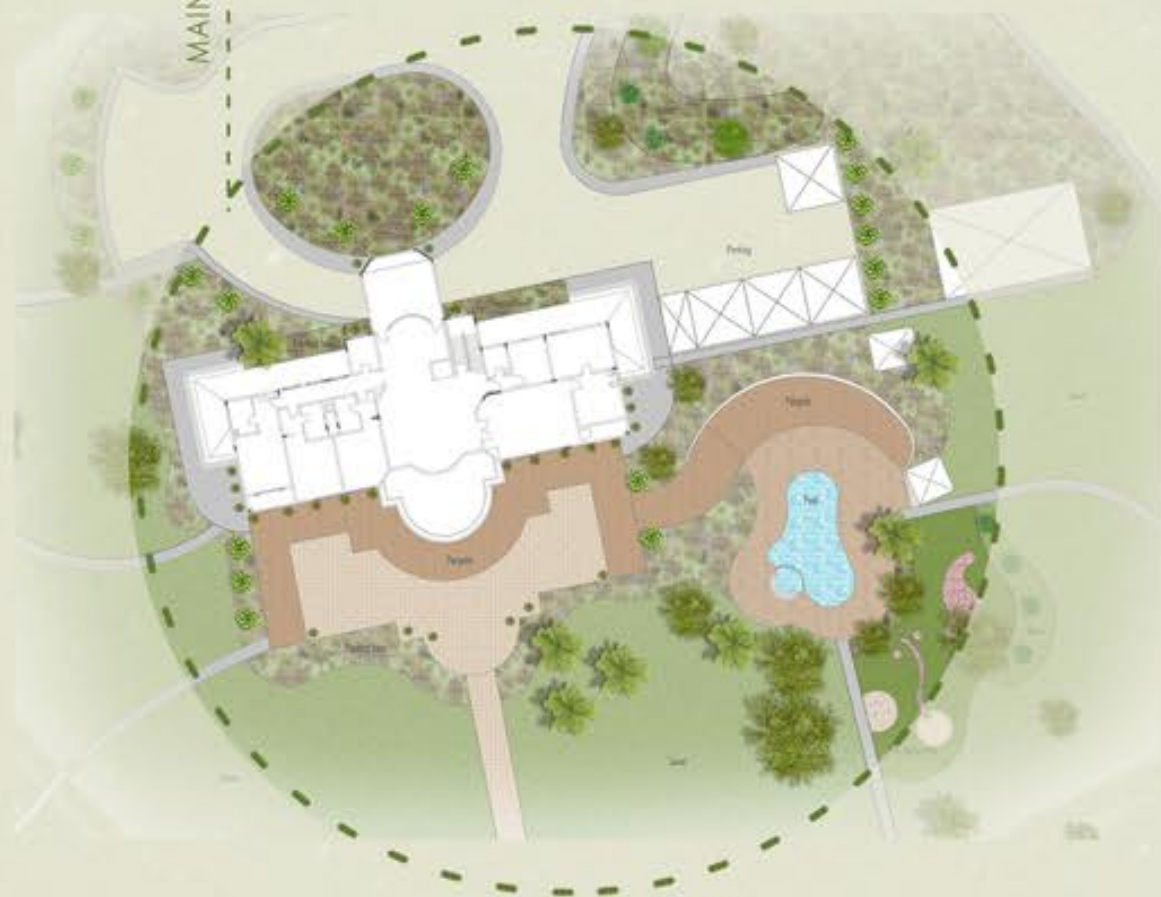
Landscape



PLANTING PLAN



LIGHTING PLAN



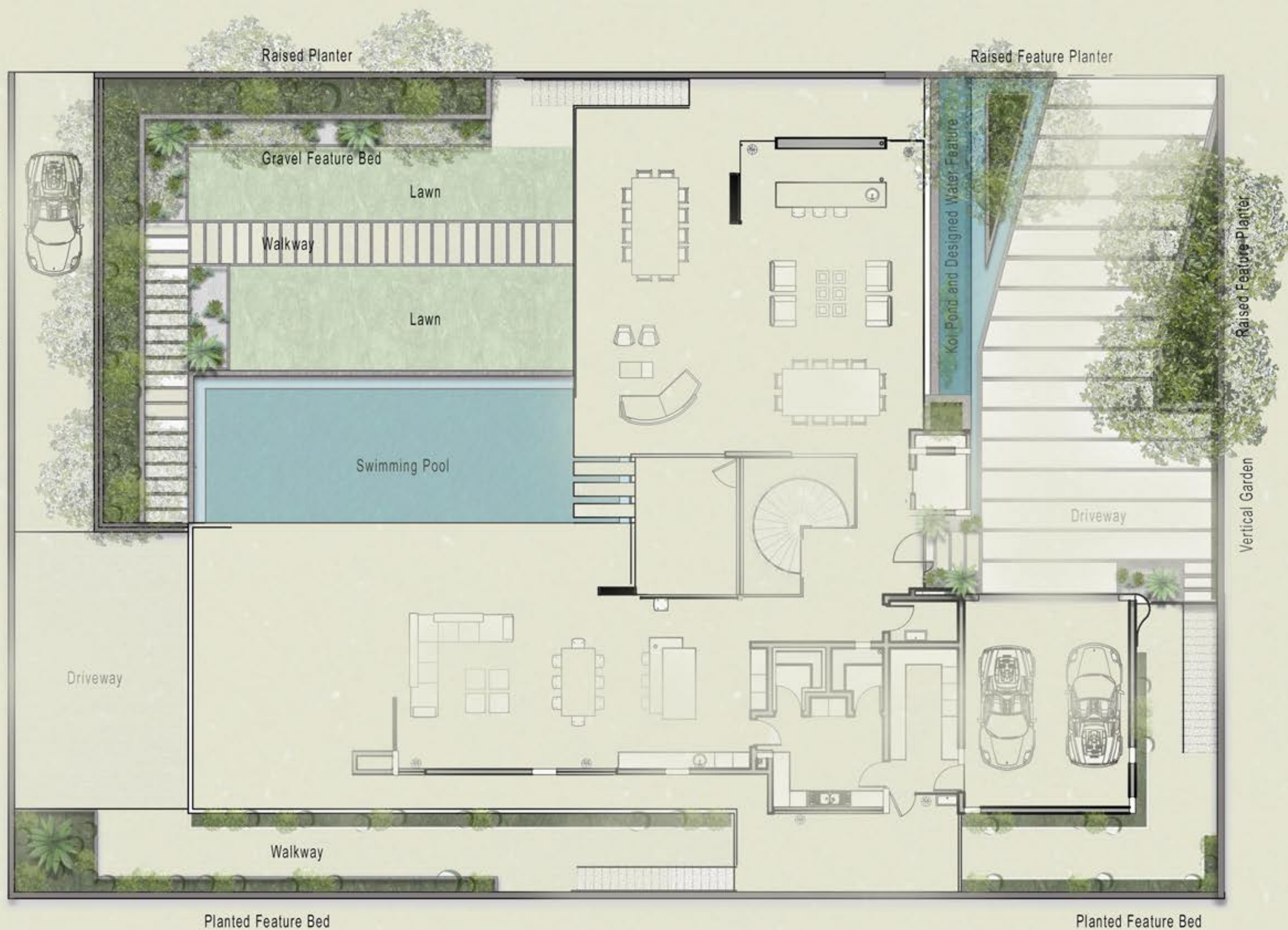
PERGOLA LAYOUT



DECKING LAYOUT

#### PROJECT DESCRIPTION:

A very modern complex in Bryanston, making use of new technologies and high-end finishes which required similar characteristics from the landscape interventions. The modern, contemporary intention of the landscape was created through a minimalistic yet dominant series of feature gardens incorporated throughout the site. Screening certain areas for a sense of privacy and highlighting various elements to emphasize and enhance important features. The small garden integrated water elements and dominant feature planter boxes with a strategic, water-wise planting scheme.



## 61 Mount Road – Bryanston, Johannesburg

# landarch

## COMPANY PROJECTS

---

### COMMERCIAL AND INDUSTRIAL PROJECTS

Central Bank of Lesotho – Maseru, Lesotho

Gold Leaf Factory – Linbro Park, Johannesburg

Eldo Village – Eldoraigne, Centurion

Kaizer Chiefs – Naturena, Johannesburg

Klipriver Business Park – Klipriver, Johannesburg

Melrose Green – Melrose, Johannesburg

#### PROJECT DESCRIPTION:

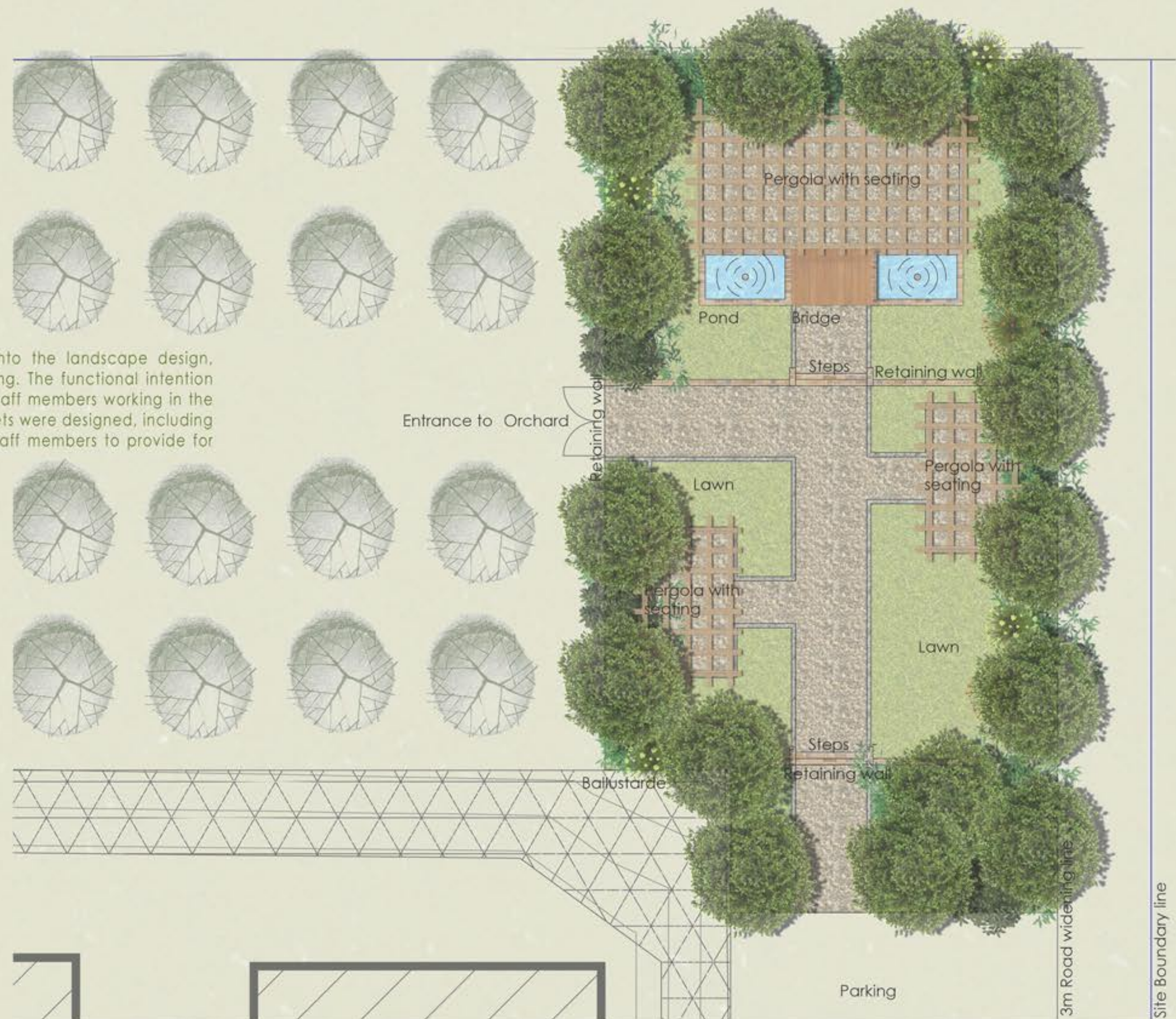
The landscape was intended to showcase the surrounding environment and vegetation, this was accomplished through the incorporation of various indigenous plant species from Lesotho. Plants were chosen for their specific characteristics such as low height, low water and maintenance requirements.



## Central Bank of Lesotho – Maseru, Lesotho

**PROJECT DESCRIPTION:**

Strong linear lines were incorporated into the landscape design, reflecting the modern lines of the building. The functional intention was centered around the relaxation of staff members working in the factory during their breaks. Exterior pockets were designed, including an orchard for personal harvesting by staff members to provide for their families.



# Gold Leaf Factory – Linbro, Park Johannesburg



PROJECT DESCRIPTION:

Multiple soccer training fields were required, with proper playing surfaces as well as drainage systems, for the renowned Kaizer Chiefs Soccer Club.



PROJECT DESCRIPTION:

For this estate, a design was required for all stand verges. An African inspired garden was designed which incorporated stormwater management and attenuation systems. The overall intention was an integrated Eco-friendly landscape and stormwater management design.



#### PROJECT DESCRIPTION:

Melrose Green was a project that strived to create a central outdoor space which catered for a large variety of events and people. The intention was to design an urban farm, farmers market and public park which provides for a number of functions and activities which draw people from the surrounding area into the outdoor space. The inclusion of a function venue, multiple stages and large open areas allows the space to transform for various events and their requirements. Movement, functionality and experience have been carefully considered in the layout of the space, the separation or transition of spaces from one to the other creates a series of "rooms" throughout the design, each contributing its own environment, experience and atmosphere to the overall sense of Melrose Green. Planting material mainly consists of fruit, vegetable and herb gardens, fully submerging the visitor in an urban agricultural landscape, the growth, harvesting and uses thereof.

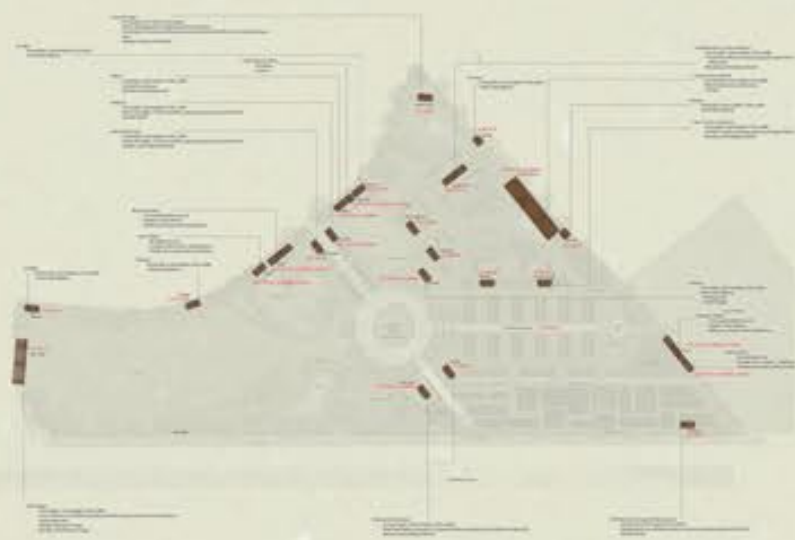


## Melrose Green - Melrose Arch, Johannesburg



DESIGN PROGRESSION

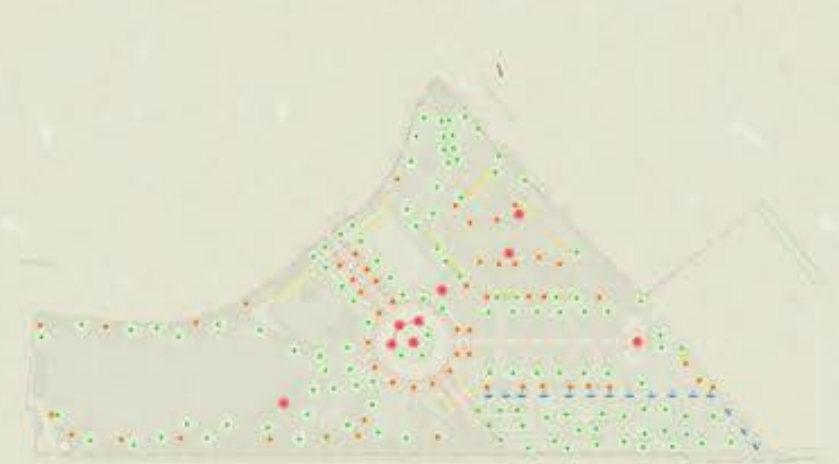
Melrose Green



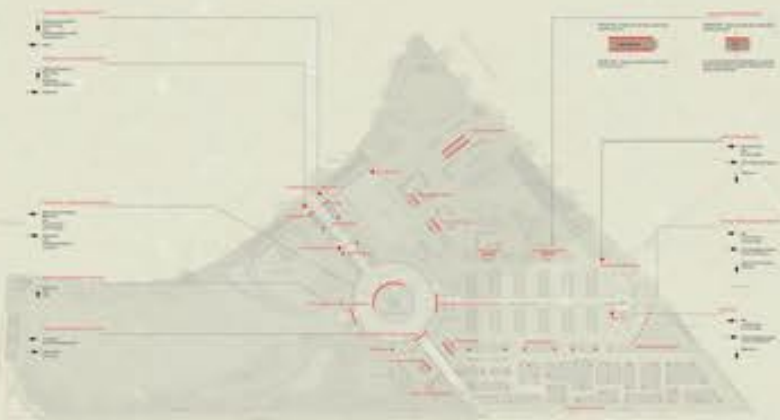
STRUCTURAL LAYOUT AND SPECIFICATIONS



DRAINAGE LAYOUT



LIGHTING PLAN



SIGNAGE LAYOUT AND SPECIFICATIONS



IRRIGATION LAYOUT



The technical requirements of the project resulted in the development of a number of plans including the electrical, plumbing and sizing specifications of the containers required for the project. A detailed signage plan was included for the understanding of the layout and ergonomics of the design, understanding the manner in which people will move through the site. Lighting, drainage and irrigation plans were also included for a clear understanding of stormwater management and drainage from event areas as well as the irrigation requirements of all planted areas.

Melrose Green

# landarch

## COMPANY PROJECTS

---

### HOTELS AND LODGES

Dona Ana Hotel – Vilanculos, Mozambique

Pemba Beach Hotel – Pemba, Mozambique

Magaruque Private Island – Mozambique

Mthatha Hotel – Mthatha, Eastern Cape

Oberoi Hotel – Dubai, UAE

Sable Lodge – Central Karoo, Eastern Cape

Thanda Lodge – Umfolozi, Kwa-Zulu Natal

Zambezi River Lodge – Victoria Falls, Zimbabwe



#### PROJECT DESCRIPTION:

Dona Ana is an iconic representation of 1952 Mozambican Architecture which has been left derelict and neglected for approximately 20 years. The design was intended to recreate a 1950's style garden which will contribute and compliment the Retro Architecture of that time along the 250m long beach front.

## Dona Ana Hotel - Mozambique



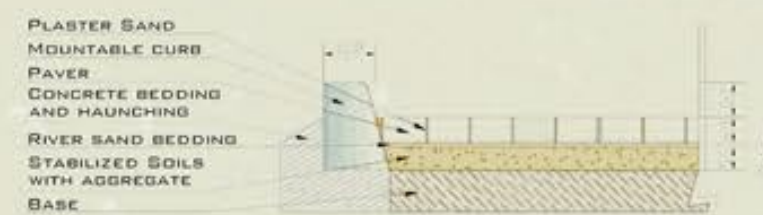
STORMWATER PLAN



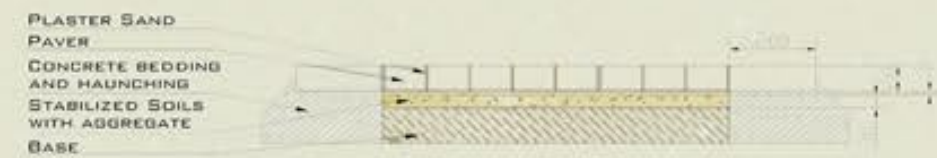
DIMENSION PLAN



LIGHTING PLAN



DRIVEWAY CROSS SECTION



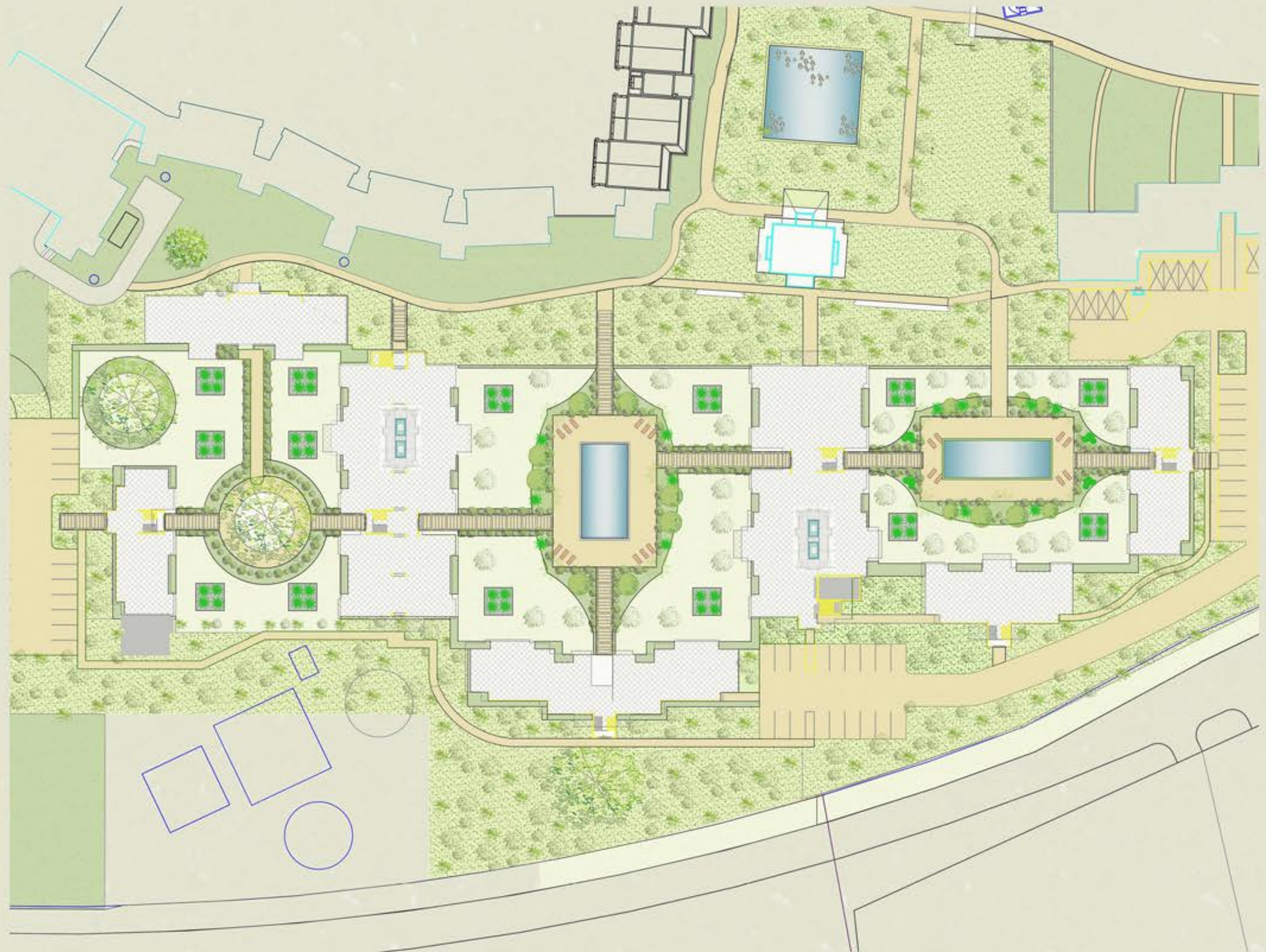
PATHWAY CROSS SECTION



UNIT DETAIL

PROJECT DESCRIPTION:

Avenues of pergolas and various rooms were created throughout this design in keeping with the overall Mediterranean inspiration for this landscape. Creeping Bougainvilleas were used as screening between rooms, incorporating aspects of colour and privacy. The avenues were designed in such a manner as to guide one through the site between ancient Baobab trees.



# Pemba Beach Hotel – Pemba, Mozambique

**PROJECT DESCRIPTION:**

This private villa called for a landscape design which was centered around the creation of an exotic island environment. This was achieved through the reintroduction of endemic plants to the site, ensuring that the units are hidden by thick planting beds, creating private and secluded spaces.



**PROJECT DESCRIPTION:**

The landscape surrounding the hotel required a user focused design, concentrating on the creation of pathways along the verge, allowing the users to easily access the facility. A natural element was incorporated into the landscape as a buffer between the main road and the hotel. Spaces were created in the landscape for areas of relaxation and interaction with the natural environment.



PROJECT DESCRIPTION:

This landscape was designed to be a modern, urban garden, incorporating rows of various planting to separate walking and seating areas. The directionality of the planting creates a strong axis and directs the flow of movement through the space towards the building.



Oberoi Hotel – Dubai, UAE

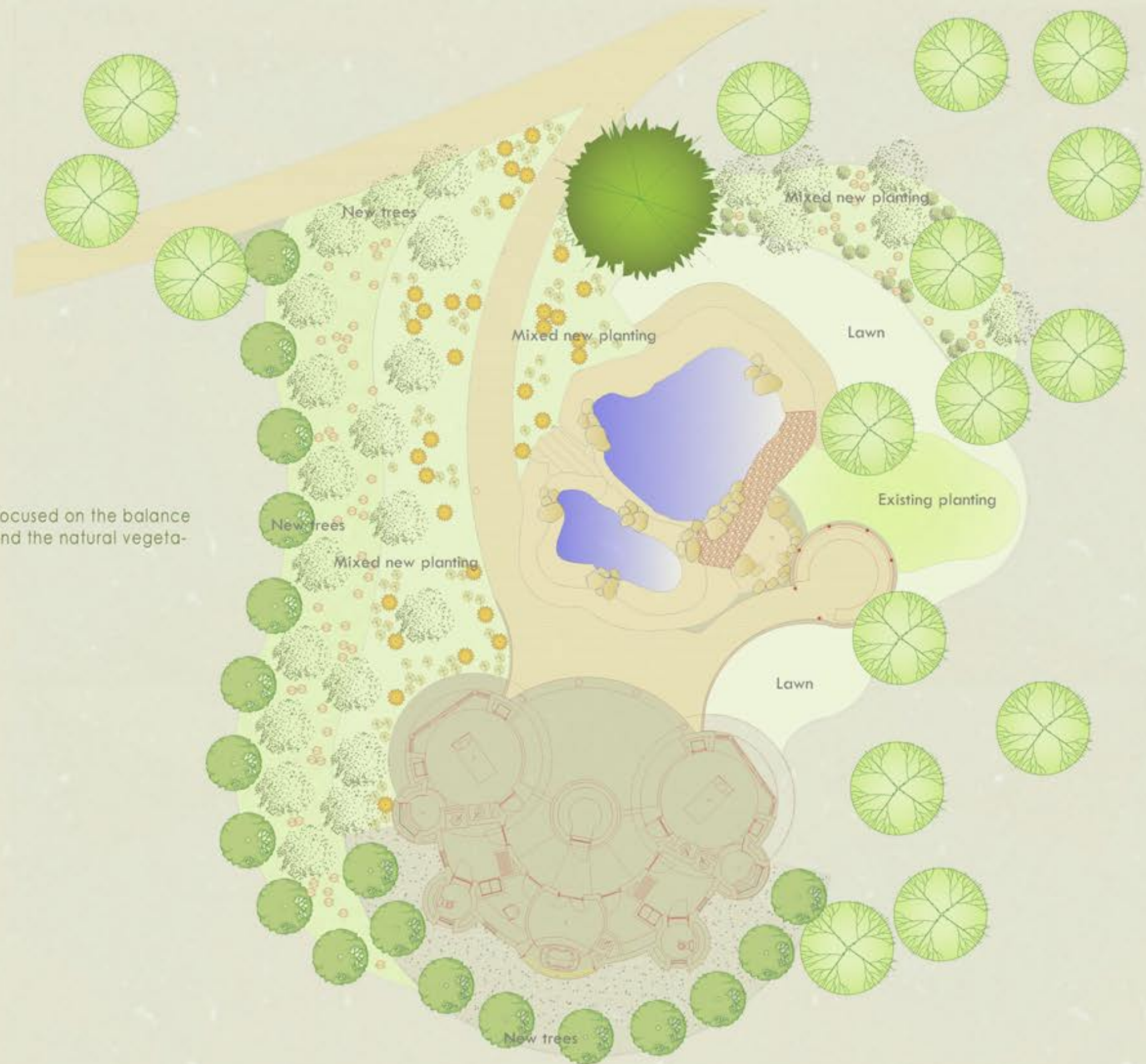
**PROJECT DESCRIPTION:**  
Strongly influenced by the traditional Cape Dutch style, the landscape included various elements such as orchards, fire pits, gravel pathways and rolling lawns.



## Sable Lodge – Central Karoo, Eastern Cape

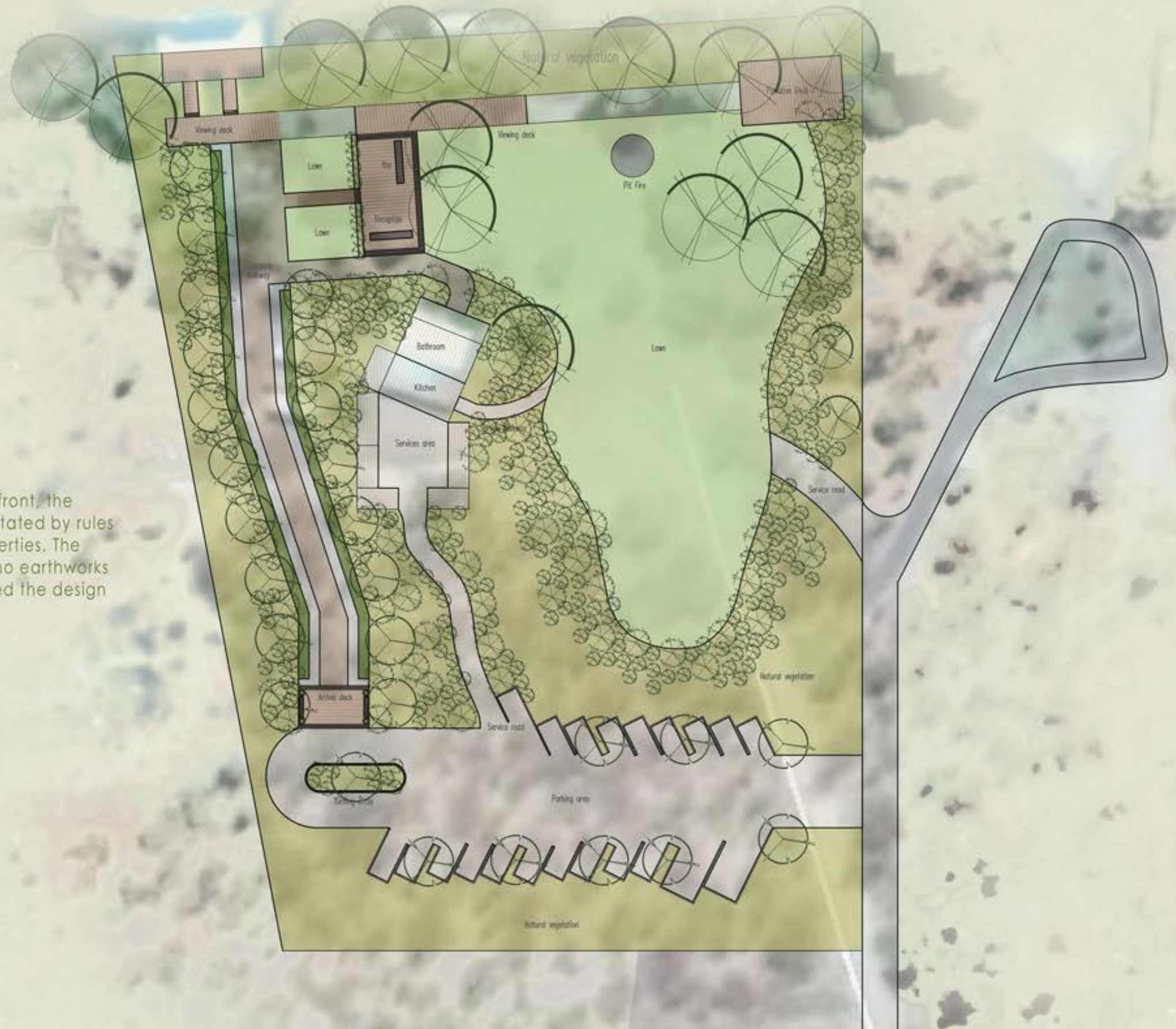
PROJECT DESCRIPTION:

Situated within a nature reserve, the landscape was focused on the balance between the planting introduced around the lodge and the natural vegetation of the surrounding Wild Bushveld.



**PROJECT DESCRIPTION:**

This property sits on the Zambezi River waterfront, the design intent was therefore very strongly dictated by rules and regulations concerning waterfront properties. The amount of lawn had to be minimal, little to no earthworks were allowed and major rehabilitation guided the design intent.



# landarch

## COMPANY PROJECTS

---

### SPECIALIZED PROJECTS

Ellis Park Stadium – CBD, Johannesburg

Forest Hill Wetland – Centurion, Pretoria

Kyalami Castle – Kyalami, Johannesburg

Mandela Memorial Garden - Qunu, Eastern Cape

Sandhurst Towers Rooftop Garden – Sandton, Johannesburg

Santa Carolina Island - Mozambique

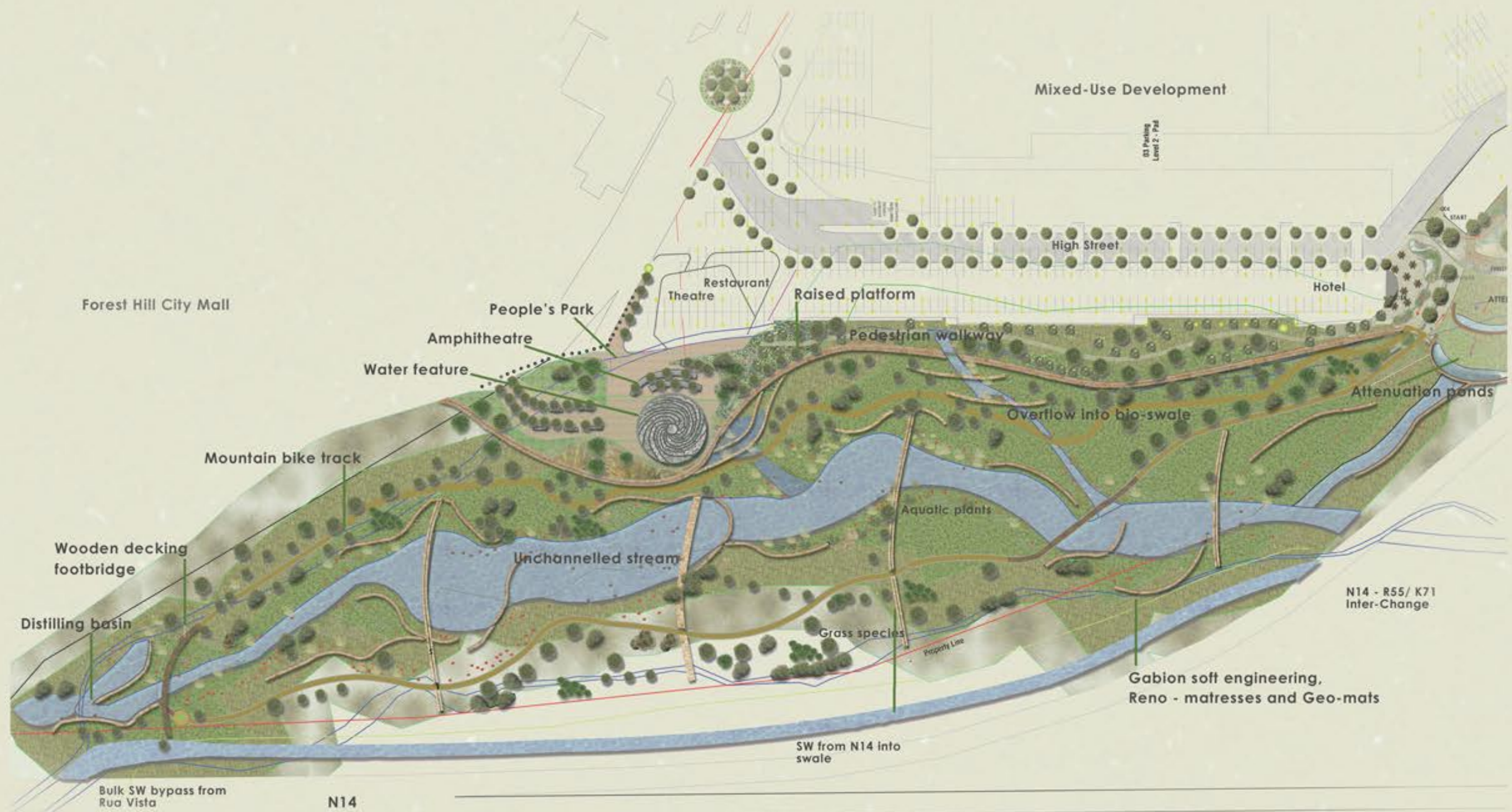
WWF Rooftop Eco Garden - CBL, Johannesburg

PROJECT DESCRIPTION:

Ellis Park was intended to be transformed into a sports precinct. The design provides spaces for a number of activities focused on various age groups. The space has been divided into areas which allow for a variety of social groups and events, creating a space that lends itself for constant use.



# Ellis Park Stadium – CBD, Johannesburg



#### PROJECT DESCRIPTION:

Recreation and rehabilitation were the main focus points when it came to designing this project. The wetland will provide a place for different social activities while reintroducing the endemic habitat of the site.

## Forest Hill Wetland – Centurion, Pretoria

#### PROJECT DESCRIPTION:

This project revolved around the rehabilitation of the site to its indigenous state. It was very important in this project as the design intent was focused on creating a truly South African experience for its users. A nature walk has been included in the design, wandering through the fenced off area where a number of various antelope species have been introduced. In terms of stormwater management, a water reticulation system has been designed to work in a series of ponds/wetlands which will contribute to the reintroduction of natural vegetation to the area.





#### PROJECT DESCRIPTION:

The memorial garden was designed to replicate Nelson Mandela's life experiences in the form of a garden. The idea is that the pathway leading you through the garden will take you through similar symbolic situations as he did in his life. The planting palette is a strong and true indication of his most loved homeland, Mveza. Along the walk descriptions will be indicated for users to truly appreciate the experience and associate themselves with Nelson Mandela's life story.



## A WALK TO FREEDOM

QUNU, EASTERN CAPE

Entrance

Storm-water channel

Parking



ENTRANCE

Signage reflects Nelson Mandela's humble personality through the use of natural materials such as rock from site and metal sheeting pole structures.



Information center

Berm  
Quarry  
Lawn  
Dam  
Berm

Rill

Path

Seating

Bed waterfeature

The big house

Berm

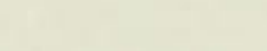
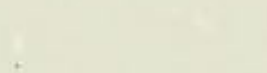
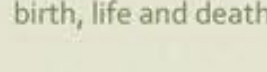
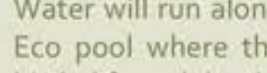
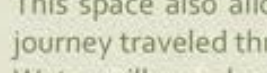
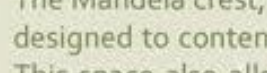
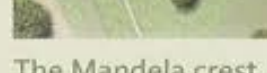
Grassed tunnel



PARKING AND INFORMATION CENTRE

The structure has been designed to create tranquil outdoor spaces. The exhibition spaces have been designed in such a manner as to reflect the Nelson Mandela Museum.





An Eco pool has been designed in the quarry as a retention dam to feed the bee water feature. As water symbolizes birth, this is the perfect start to the journey, starting at the beginning of Mandela's life story.



The Mandela crest, the bee, will be built out of rock, a space designed to contemplate or pay tribute to Nelson Mandela. This space also allows one to look back and reflect on the journey traveled through the garden. Water will run along the pathway from the bee back to the Eco pool where the journey began, symbolizing Madiba's birth, life and death.

#### THE BEE - WATER FEATURE



#### THE QUARRY





Entrance

Storm-water channel

Parking

Information center

Berm

Quarry

Lawn

Dam

Berm

Berm

THE GRAVE SITE

Rill

Path

Bed waterfeature

Seating

The big house

Berm

GRASS TUNNEL

Grassed tunnel



The roof structure symbolizes safety and security/holding together the graves that lie beneath. The roof slopes upwards towards the heaven, allowing in a single beam of natural light symbolizing Madiba's presence.



This dark tunnel represents the dark times of Mandela's life, being captured, as you walk out of the tunnel, it represents Mandela's release from prison, followed by a steep pathway up the slope as Mandela struggled to become a truly free man

**PROJECT DESCRIPTION:**

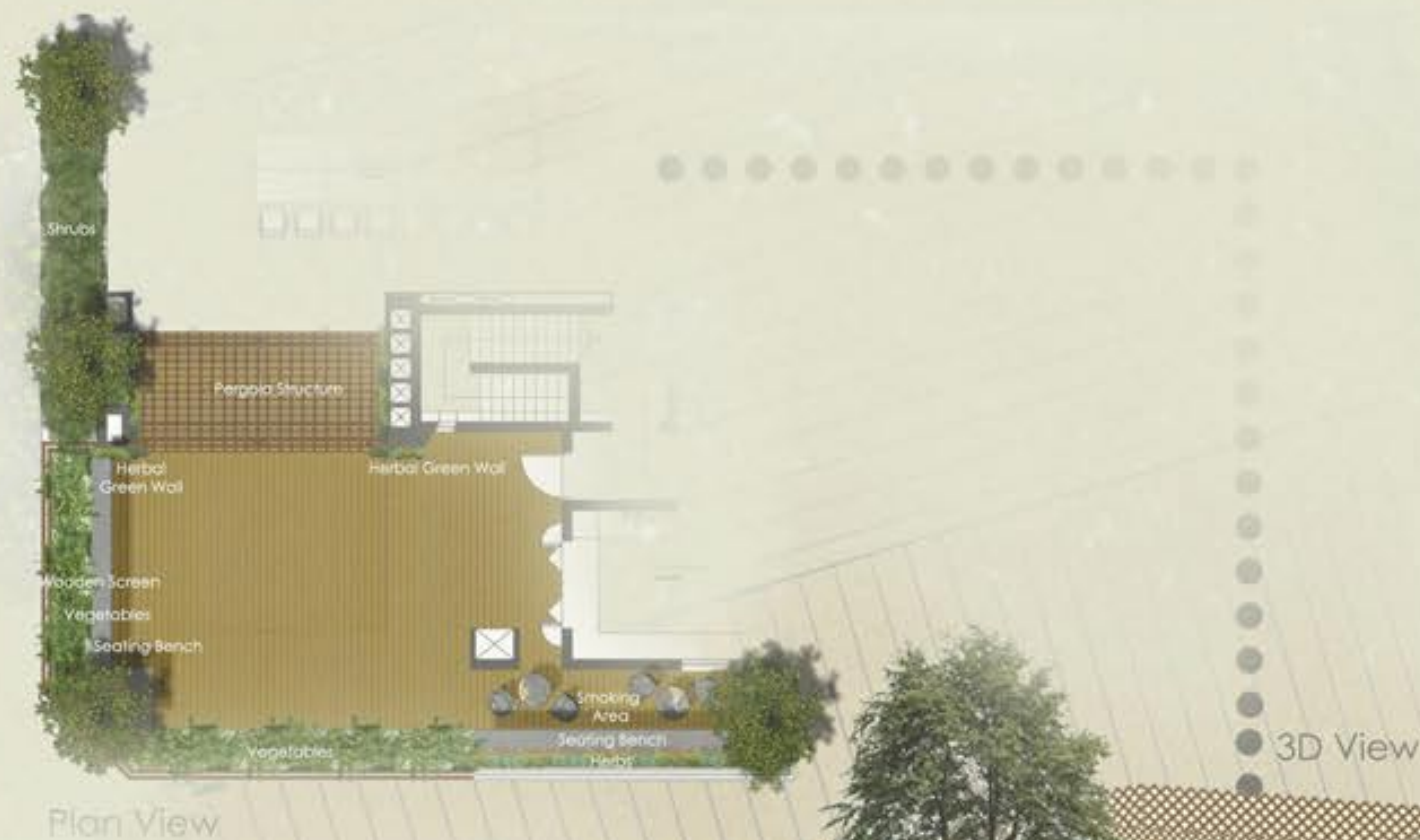
There was a Modern design inspiration for this high-end, rooftop garden. The functional intention of the garden was centered around the creation of an outdoor area, accessible and available for utilization by people who are living in their apartments nearby and have no access to such spaces.





PROJECT DESCRIPTION:

The landscape intervention on this Island focused mainly on the protection and maintenance of all existing vegetation. There was a strong sense of site rehabilitation as well as dividing the site into areas of high use, adapting the planting in these zones to the high level of activity, making use of a selection of hardy and low maintenance plants.



#### PROJECT DESCRIPTION:

This project was concerned with the use and implementation of Green Star principles. This included the incorporation of vertical gardens, herb and vegetable planters and water-wise planting while making use of recycled planter box materials.



